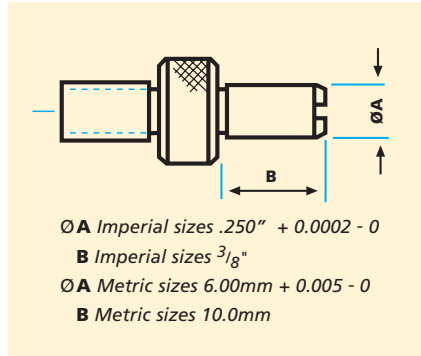


HOLE POSITION, BARREL DEPTH AND GROOVE GAUGES

Tapped Hole Position Gauges

Used for testing hole position on CMMs. This table shows our standard programme.

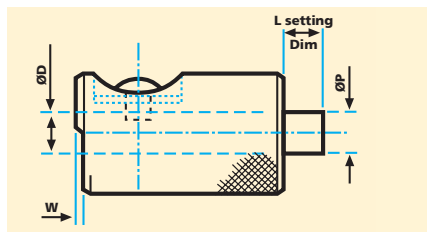
Please consult us for features or accessibility requirements outside the scope of the standard style.



UNF:UNC	ISO METRIC	CODE		
		UNF	UNC	METRIC
No.2	M2	THP1F	THP1C	THP1M
No.4	M2.5	THP2F	THP2C	THP2M
No.5	M3.0	THP3F	THP3C	THP3M
No.6	M3.5	THP4F	THP4C	THP4M
No.8	M4	THP5F	THP5C	THP5M
No.10	M5	THP6F	THP6C	THP6M
1/4"	M6	THP7F	THP7C	THP7M
5/16"	M8	THP8F	THP8C	THP8M
3/8"	M10	THP9F	THP9C	THP9M
7/16"	-	THP10F	THP10C	-
1/2"	M12	THP11F	THP11C	THP11M
9/16"	M14	THP12F	THP12C	THP12M
5/8"	M16	THP13F	THP13C	THP13M
3/4"	M18	THP14F	THP14C	THP14M
7/8"	M20	THP15F	THP15C	THP15M
-	M22	-	-	THP16M
1"	M24	THP17F	THP17C	THP17M

Simple, easy to use measuring tools for testing single features quickly and with reliability.

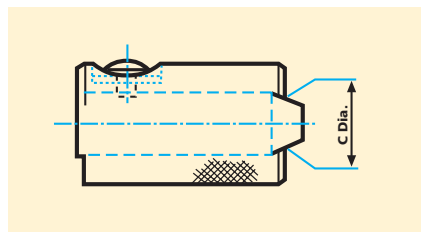
Barrel Depth Gauges



'D' Dia. mm	Code
6	BDG6
8	BDG8
10	BDG10
12	BDG12
16	BDG16
20	BDG20
25	BDG25

Please advise 'P', 'L' and 'W' dimensions when ordering.

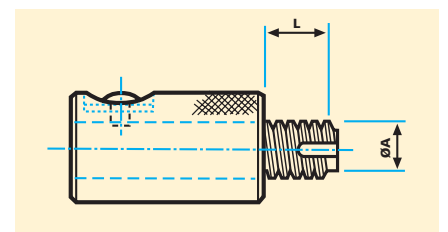
Countersink Gauges



'C' Dia. mm	Code
3 to 6	CDG6
6 to 8	CDG8
8 to 10	CDG10
10 to 12	CDG12
12 to 16	CDG16
16 to 20	CDG20
20 to 25	CDG25

Please supply dimensions of countersink when ordering.

Thread Depth Gauges



Nom. Thread Dia.		Code	
Metric	Imperial	Metric	Imperial
6	1/4"	TDG6	TDG250
8	5/16"	TDG8	TDG312
10	3/8"	TDG10	TDG375
12	1/2"	TDG12	TDG500
14	9/16"	TDG14	TDG562
16	5/8"	TDG16	TDG625
18	11/16"	TDG18	TDG678
20	3/4"	TDG20	TDG750

Please supply thread size and depth when ordering.

Rok-It Groove Gauges

The self-aligning spherical form provides a quick and positive read-out, without searching for the high point - even with the gauge at an angle to the workpiece.

Lift the sliding anvil by a turn of the knob...
...and see immediately if the groove diameter is...

Within Tolerance
OR...
Undersize - yes .040mm
OR...
Oversize - yes .080mm